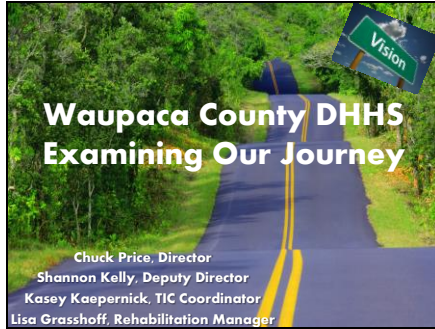
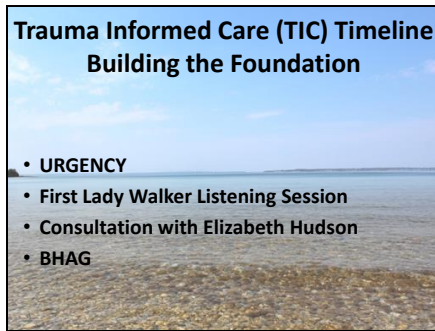


Slide 1



Slide 2



Slide 3



Slide 4

Waupaca County DHHS Leadership Charter

*As leaders in our organization, we believe our **Core Values** guide us in our work with colleagues, clients, and community members. We commit our passion and professionalism to incorporate the following principles in all that we do:*

- We will model a **Trauma Informed Approach**.
- We will apply **Civility** in each interaction.
- We will inspire **Future Leaders** and support all those who seek guidance.
- We promote **Collaboration** and the building of **Trusting Relationships**.
- We seek to be the **Center of Excellence** in our community.

We promise to be strength-based, practice humility, promote equality, spark creativity, encourage and demonstrate compassion, and engage in civic duty as public servants.

We strive to deliver superior services, with distinctive lasting impact on the health of individuals, families, and our community.

Slide 5

The Waupaca County DHHS vows to practice the following Trauma Informed Care Principles:

PARTNER
with Clients

Be WELCOMING

RESPECT
Human Rights

Be
STRENGTH BASED

**Earn
TRUST**

**Offer a
HELPING HAND**

Promote SAFETY

Be PERSON CENTERED

SHARE Power

Slide 6

Creating a Trauma Informed Workforce

- * All Staff Trainings on ACEs, TIC & Resiliency
- * TIC Committee
- * TIC & ACEs in Staffings
- * Secondary Traumatic Stress Training
- * Organizational Effectiveness
- * Case Planning Training
- * Permanency Values Training
- * All Agency Meeting on Becoming a Center of Excellence
- * Reflective Practice at the Leadership Level
- * Youth Crisis Pilot Project

Slide 7

Creating A Trauma Informed Environment

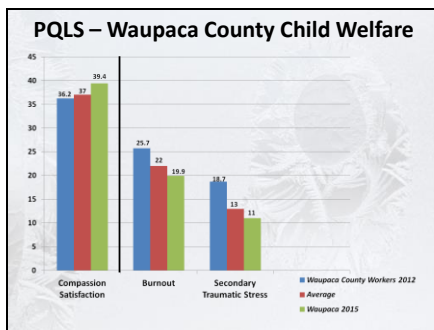
- START/STOP/CONTINUE
- Environmental Changes
- SPARKS & Job Crafting
- Speak Your Peace Civility Tools
- T.H.I.N.K

Slide 8

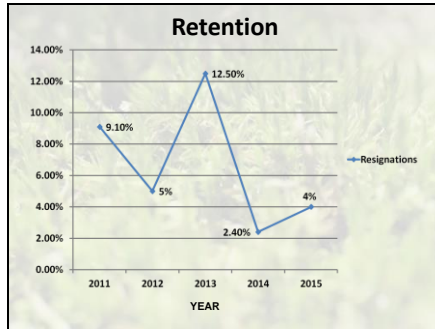
Professional Quality of Life Scale (B. Hudnall Stamm)

- **Secondary Traumatic Stress**
Waupaca= 11.0 (Average:13)
- **Burn Out**
Waupaca= 19.9 (Average:22)
- **Compassion Satisfaction**
Waupaca= 39.4 (Average:37)

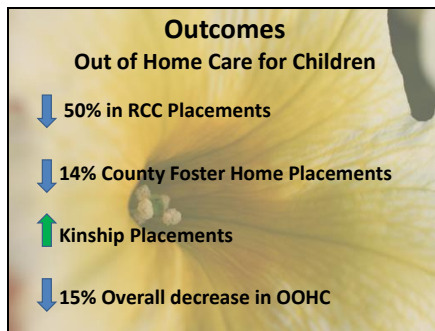
Slide 9



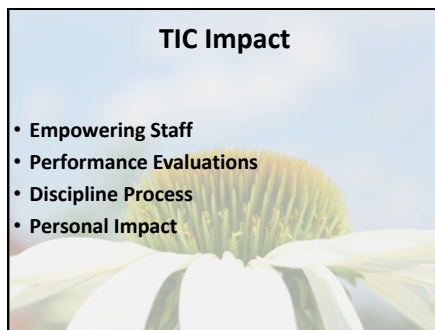
Slide 10



Slide 11



Slide 12



Slide 13

Collective Impact

- WCC4P
- Early Childhood Comprehensive Systems
- Rise Together
- Mentoring Programs (Internal /External)
- ThedaCare Community Plunges
- Fox Valley Technical College - Early Childhood Mental Health Summit & Students
- CESA 6

Slide 14

Community Trainings (Shared Language/Vision)

2014

2015

New London School District Student Support Staff	Walworth County DHHS Shawano County ThedaCare Plunge
Together For Children Conference Community Care (Waupaca, Outagamie, Calumet)	CESA 6 Fulfilling The Promise Conference Collective Impact Webinar
Indianhead Community Action Agency Head Start Waupaca County Head Start/Early Head Start Local Church	Early Childhood Comprehensive Systems Webinar Fox Valley Technical College Early Childhood Students Waupaca High School Teachers
New London/Waupaca ThedaCare Plunge Fostering Futures UW-Oshkosh Nursing Students Waupaca Rotary Club Northern Region Training Waupaca County Heroin Summit New London Rotary	New London Intermediate School (5 th -8 th grade) Healthy Families=Healthy Communities Conference Early Childhood Mental Health Summit Wisconsin Head Start Association Conference Wisconsin Counties Human Services Association Wisconsin Association of Family and Children Agencies

Slide 15

Continuing the TIC Journey

- Continue with Community Trainings
- Future Community Collaborations
 - Law enforcement
 - Schools
 - Judicial
- Foster Care Program Revamp
- Prevention Programs and Resource Allocation
- Consumer Voice
- No more “Rule 84”

Slide 16

